

Hohokam 10 West Park

3414, 3416, 3418 S. 48th Street Phoenix, AZ



NEWMARK

KERI SCOTT, SIOR

Sr. Managing Director
t 602-386-7153
keri.scott@nrmk.com

JACK KERKORIAN

Associate
t 602-295-1896
jack.kerkorian@nrmk.com

PROPERTY HIGHLIGHTS

3414, 3416 & 3418 S 48TH STREET, PHOENIX, AZ



Close proximity to Sky Harbor International Airport



Evaporative Cooled or Air-Conditioned Warehouse Suites Available



Convenient Access to the SR-143, I-10, US-60 and Loop 202



Fire Sprinklered



12' Grade Level Doors



Common Truckwell



16-18' Warehouse Clearance



Zoning: A-1, City of Phoenix

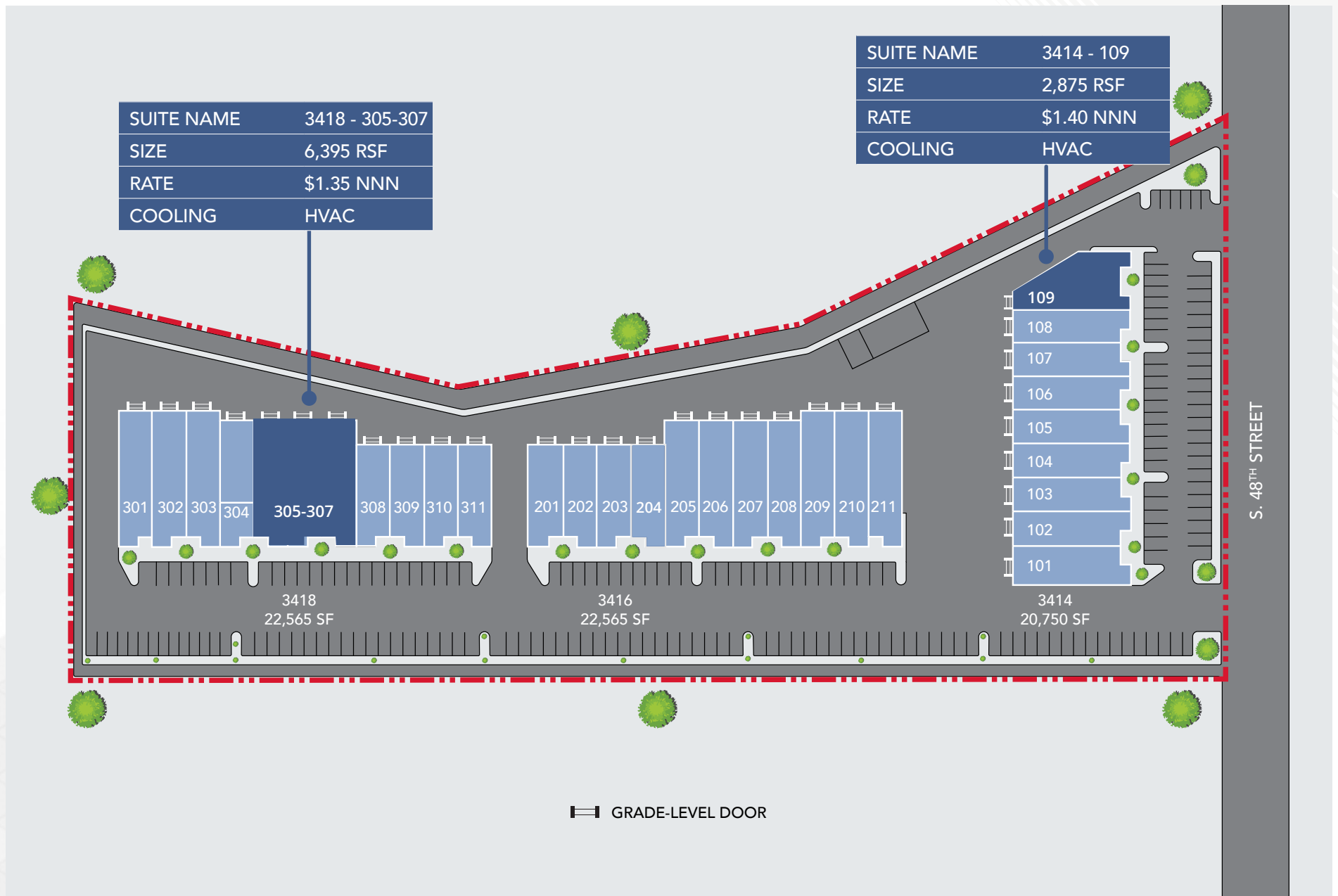






SITE PLAN

3414, 3416 & 3418 S 48TH STREET, PHOENIX, AZ

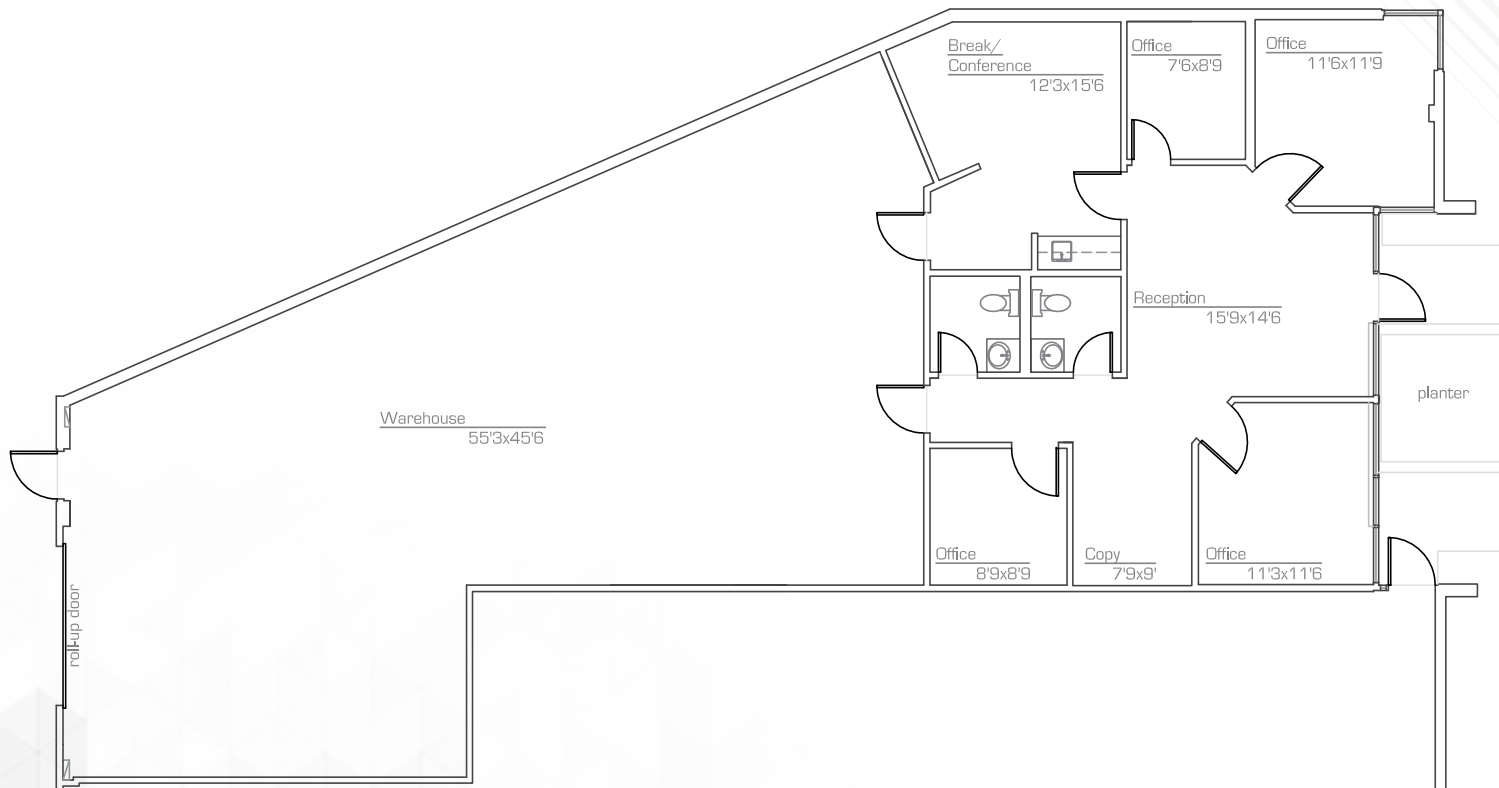


FLOOR PLAN

3414, 3416 & 3418 S 48TH STREET, PHOENIX, AZ



VIRTUAL TOUR



SUITE 3414 - 109

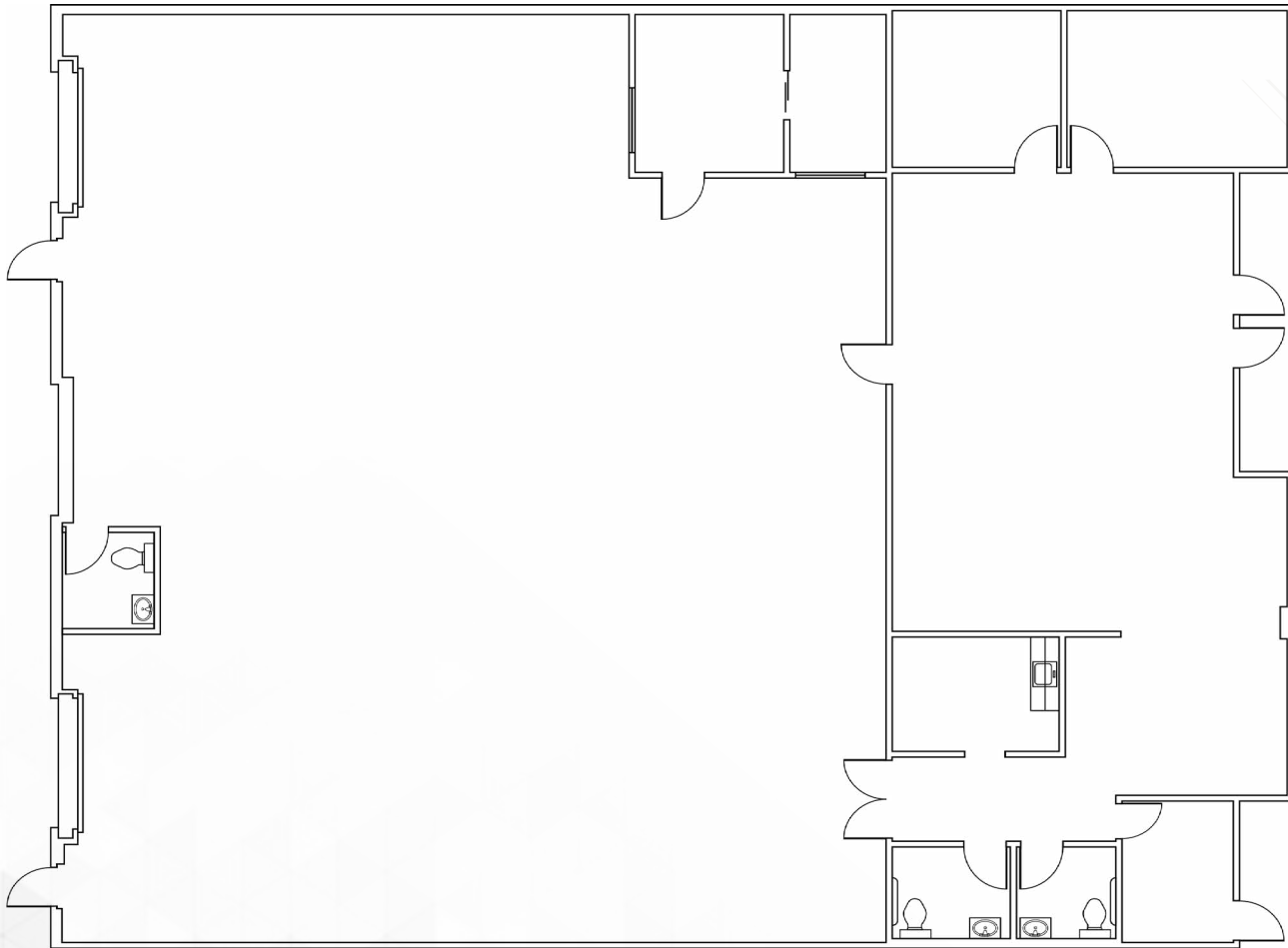
2,875 RSF

HVAC COOLING

RATE \$1.40/SF NNN

FLOOR PLAN

3414, 3416 & 3418 S 48TH STREET, PHOENIX, AZ



 VIRTUAL TOUR

SUITE 3418 - 305-307

6,395 RSF

AVAILABLE 7/1/26

HVAC COOLING

RATE \$1.35/SF NNN

3414, 3416 & 3418 S 48TH STREET, PHOENIX, AZ

Hohokam 10 West Park

3414, 3416, 3418 S. 48th Street Phoenix, AZ



SCOTT INDUSTRIAL TEAM

KERI SCOTT, SIOR

Sr. Managing Director
t 602-386-7153
keri.scott@nmrk.com

JACK KERKORIAN

Associate
t 602-295-1896
jack.kerkorian@nmrk.com

NEWMARK

The information contained herein has been obtained from sources deemed reliable but has not been verified and no guarantee, warranty or representation, either express or implied, is made with respect to such information. Terms of sale or lease and availability are subject to change or withdrawal without notice.