

2130

GULFSTREAM

Prescott, Arizona



Industrial / Flex Opportunity

NEWMARK

Keri Scott
Senior Managing Director
t 602-386-7153
keri.scott@nmrk.com

PROPERTY OVERVIEW

2130 Gulfstream is a high-quality industrial building located within the Prescott Airpark near Prescott Regional Airport. Ownership is seeking a single tenant on a long-term NNN lease, ideally a national or global tenant. The property offers modern building improvements, outdoor storage potential, and limited competing industrial supply in the Prescott market.

Key Highlights



Single-tenant industrial opportunity



Large, Fully Fenced Secure Outdoor Storage Yard with Pull-Through Yard Access



Ideal for **national / global tenant**



Limited **industrial outdoor storage supply**



Located within **Prescott Airpark**



Interstate 17 Expansion Fosters Fast Commute to Phoenix and TSMC



Nearby Freeway Access to **SR 89A and SR 89**



Zoning: IL – Light Industrial

LOGISTICS MAP

Key Demographics



Prescott MSA Population
~120,000



Median Household Income
~\$73K



Population Growth
~1% annually



PRESCOTT OVERVIEW

Prescott is Arizona's friendliest and most livable city. At 5,200 feet in elevation, the perfect weather attracts a steady influx of entrepreneurial residents attracted to business, recreation, leisure, entertainment, and living in this gem of a location. Among the fastest growing metropolitan areas in Arizona, with a combined population of 111,617. The Prescott (4.0% growth) / Prescott Valley (7.0% growth) area is the 3rd largest MSA in the state after the Phoenix MSA and Tucson MSA.



DEEP WELL RANCH DEVELOPMENT

Deep Well Ranch is a multi-use development which includes residential, retail, entertainment, flex, and recreational facilities spanning 1,800 acres and offering 10,500 dwelling units at buildout. Located near to Prescott Regional Airport and with convenient access to SR 89A and SR 89, this new development represents the hub of future Prescott area growth and path of progress.



PRESCOTT REGIONAL AIRPORT

The Prescott Regional Airport is a regional economic engine and the 18th busiest airport in the nation. The main terminal was renovated in 2019, with plans and funding in place for a main runway expansion to 10,000 ft. FAA classified as a Class II Commercial Service airport it currently serves commercial and general aviation for Yavapai County. United Express offers commercial flights. Major airports within a twohour flight include Los Angeles, San Diego, Denver, Salt Lake City, Las Vegas, Phoenix and Tucson.



EMBRY-RIDDLE AERONAUTICAL UNIVERSITY

Embry Riddle Aeronautical University's Prescott, Arizona campus is respected worldwide for cutting-edge instruction and training for tomorrow's aviation, aerospace, security and intelligence leaders. Embry-Riddle is ranked as the: #1 Most innovative school, #1 Best Undergraduate Aerospace Engineering school, and #3 best college for veterans.



PRESCOTT FIRE CENTER (USDA / USNF)

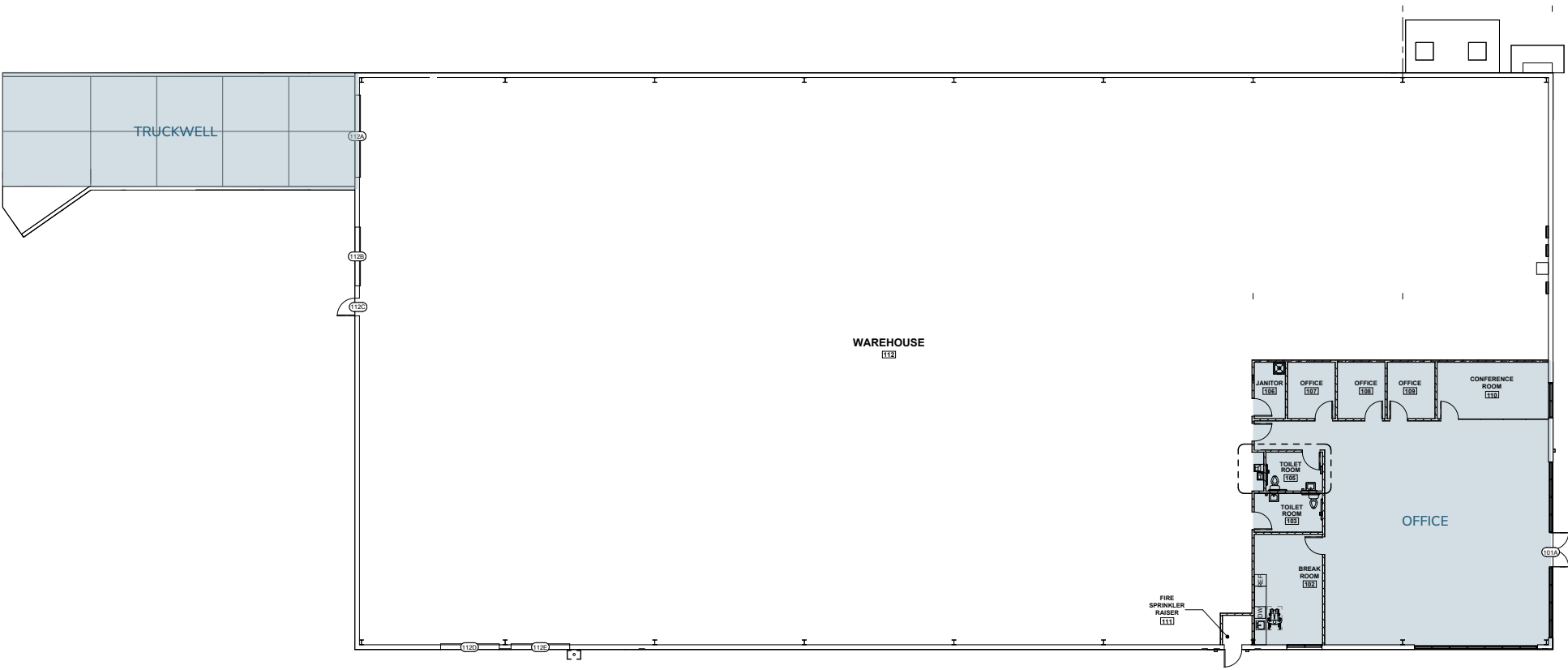
The Prescott Fire Center and Henry Y. H. Kim Aviation Facility is located at the Prescott Regional Airport. A highly trained, professional staff coordinates, supports, and assists in the management of interagency, multiagency, and international responses to emergencies and natural disasters. The Center combines an Aviation Program, Zone Incident Coordination Communication Center, National Emergency Incident Supply Center, Interagency Hotshot Crew, Helitack Crew, Air Tanker Base, and a Fire and Emergency Incident Training Program.



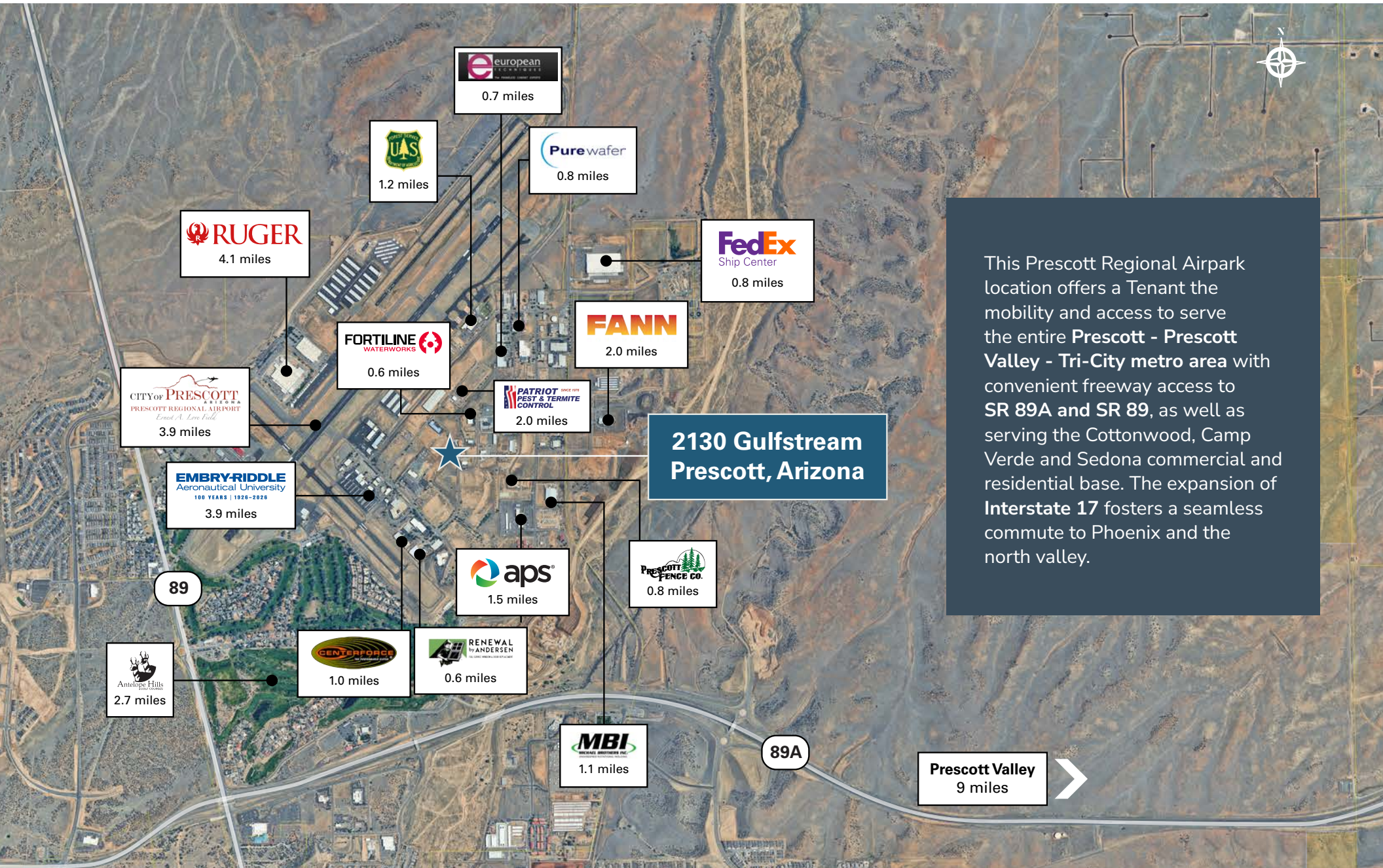
RUGER

Sturm, Ruger & Co., Inc. is one of the nation's leading manufacturers of rugged, reliable firearms for the commercial sporting market. With products made in America, Ruger offers consumers almost 800 variations of more than 40 product lines, across both the Ruger and Marlin brands.

FLOOR PLAN

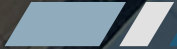


PRESCOTT AIRPARK LOCATION

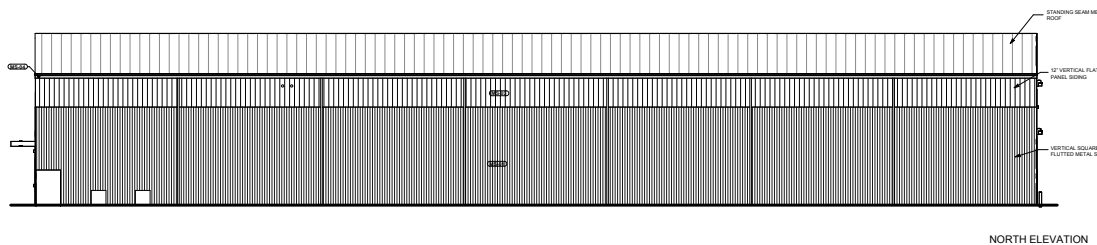
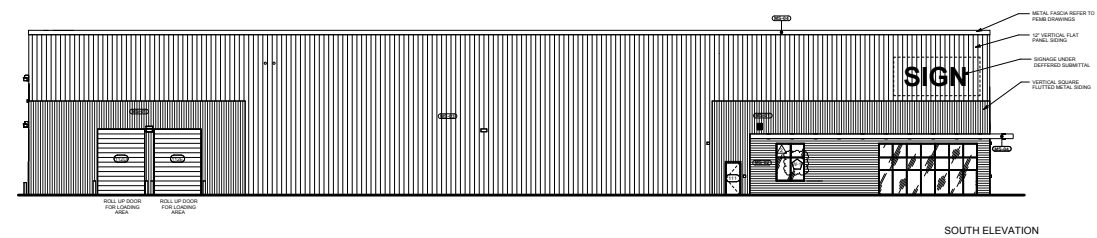
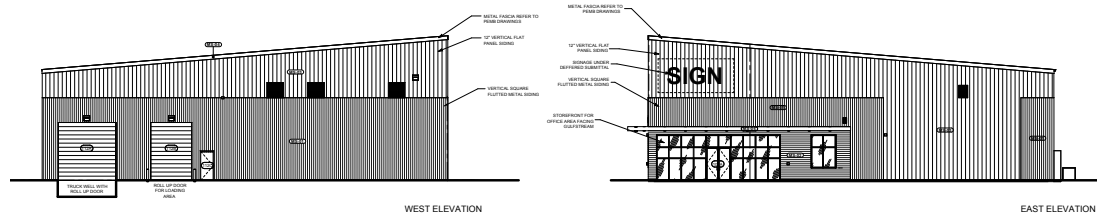


This Prescott Regional Airpark location offers a Tenant the mobility and access to serve the entire Prescott - Prescott Valley - Tri-City metro area with convenient freeway access to SR 89A and SR 89, as well as serving the Cottonwood, Camp Verde and Sedona commercial and residential base. The expansion of Interstate 17 fosters a seamless commute to Phoenix and the north valley.

SITE PLAN



PROPERTY HIGHLIGHTS



Address	2130 Gulfstream
Building type	New steel build industrial warehouse IOS
Tenancy	Single Tenant
Total Building	20,000 SF
Office	2,500 SF
Lot Size	1.66 Acres
APN	102-03-028
Coverage (FAR)	33%
Clear Height	24' - 36'
HVAC	New AC Office/Gas-heated Warehouse
Roll Up Doors	3) 10' x 14' & (1) 14' x 14'
Column Spacing	Freespan
Sprinkler	Fully sprinkled, Wet
Lighting	LED warehouse/office
Roof Type	New Steel, standing seam
Power	800 AMP power (12-/208v, 3PH)
Zoning	IL, Light Industrial
Truck Court Depth	150'
Type of Ownership	Fee Simple
Parking	Asphalt - 36 spaces
Year Built	2026
Tax 2026 (Estimated)	\$5,284

2130

GULFSTREAM

Prescott, Arizona

Keri Scott

Senior Managing Director

t 602-386-7153

keri.scott@nmark.com

The information contained herein has been obtained from sources deemed reliable but has not been verified and no guarantee, warranty or representation, either express or implied, is made with respect to such information. Terms of sale or lease and availability are subject to change or withdrawal without notice.

NEWMARK

